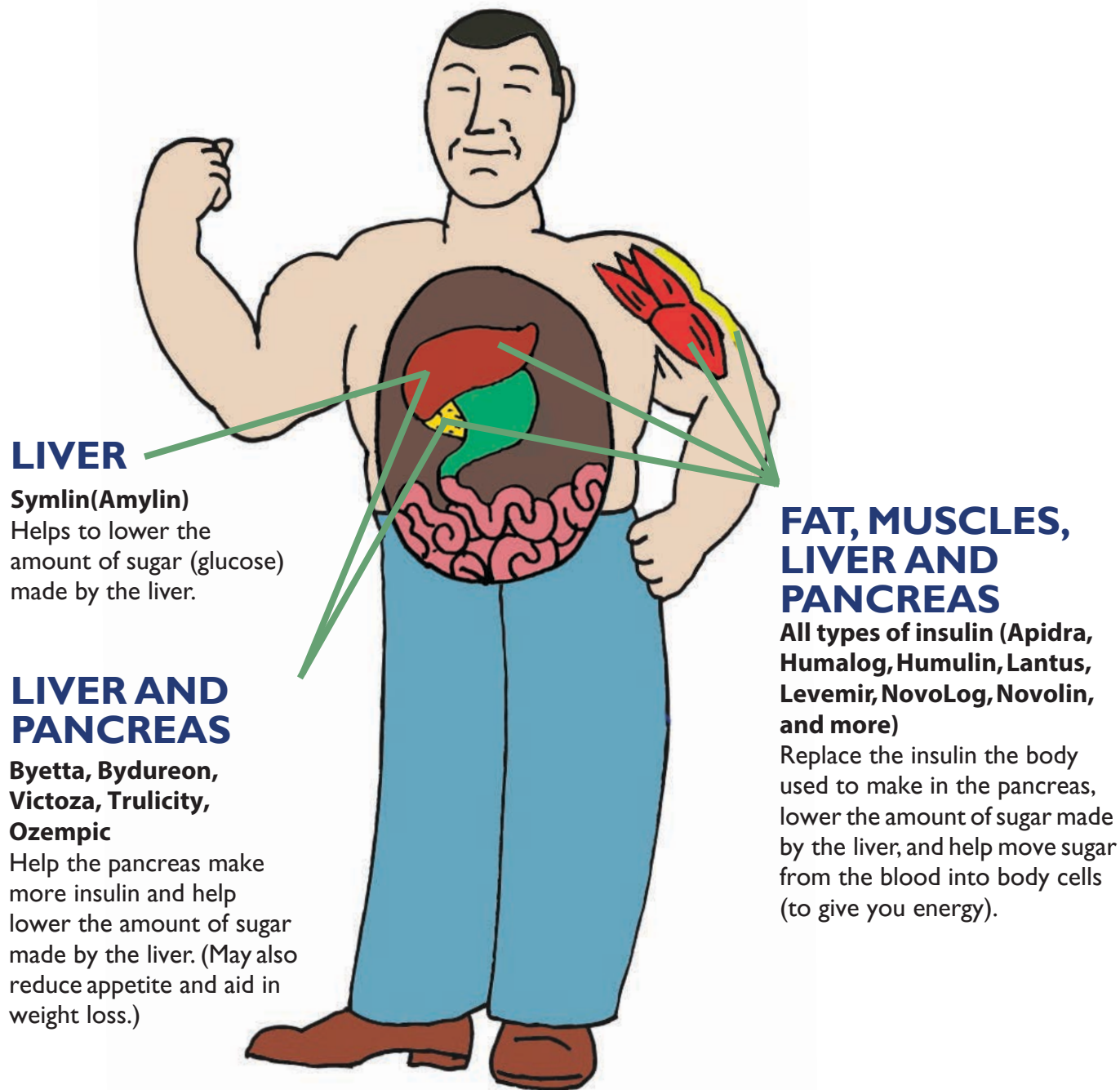


# MEDICINES YOU INJECT

## HOW AND WHERE THEY WORK

Many people take shots (injections) to help them control their diabetes. Some are insulin; others are hormones or protein. Like diabetes pills, shots may work in different ways in different parts of the body.

The drawing (picture) below will help you understand how and where diabetes medicines that people inject work:\*



\* Not all diabetes medicines that can be injected are listed.