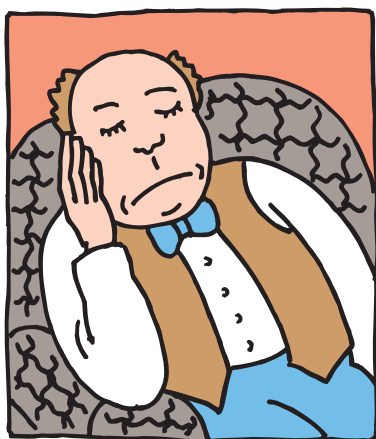
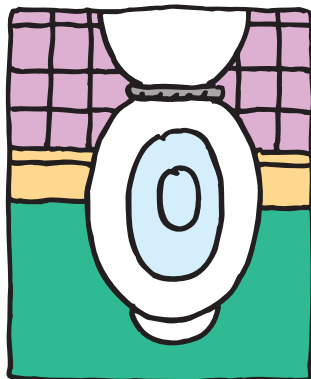


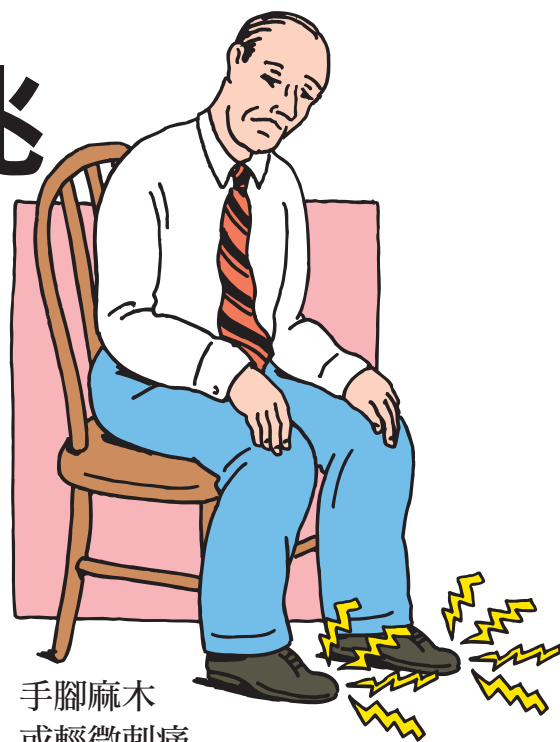
# 糖尿病認識徵兆



疲累或嗜睡



頻尿



手腳麻木  
或輕微刺痛



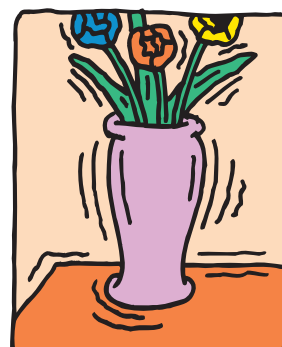
傷口久不癒合



陰道感染



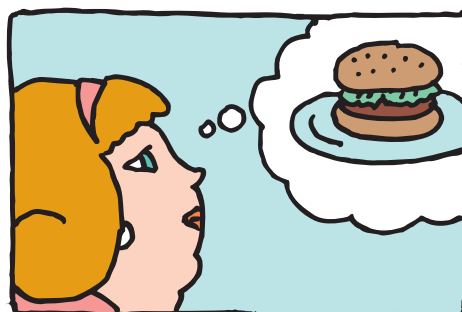
性交困難



視力模糊



體重突然減輕



明顯的飢餓感



時常口渴

如果您有上述任何問題 (尤其是如果出現上述徵兆一週以上)，請諮詢您的醫生。